

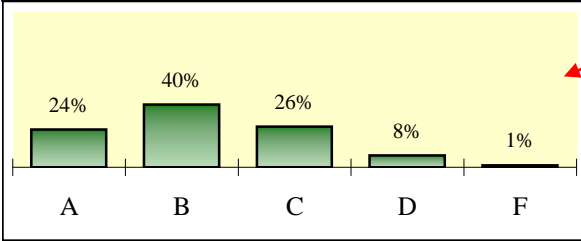
---

# **BUDGET/THE BUDGET PROCESS**



# BUDGET/BUDGET PROCESS: PARENTS

**Parents' Satisfaction Rating Distribution**



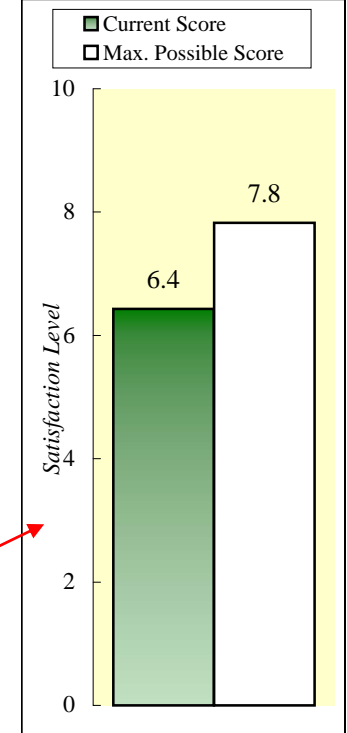
This graph shows the distribution of satisfaction scores parents provided for the overall budget/budget process rating question.

**Impact Index** is a combination of the penalty and the % reporting the problem. It represents the percent of **potential improvement** that can be realized if the occurrence of the problem is reduced to zero.

**Penalty** for each issue is the difference between the mean satisfaction scores of those who reported that an issue was a problem and those who reported that the same issue was not a problem. The larger the penalty, the larger the effect of the problem is on satisfaction for those people who have experienced the issue.

| BUDGET/BUDGET PROCESS  | % with Problem | Penalty | IMPACT INDEX |
|--|----------------|---------|--------------|
| Does your school district do a good job communicating regarding the school budget? | 39%            | 2.9     | 77%          |
| Have budget restrictions affected your child's education?                          | 41%            | 0.8     | 23%          |
| Do you have an opportunity for input into the budget process?                      | 52%            | 0.0     | 0%           |
| Do your schools give you a good value for your tax dollar?                         | 32%            | 0.0     | 0%           |
| (If yes) Did you vote yes in the budget vote last year?                            | 22%            | 0.0     | 0%           |
| Are administrators responsible in their handling of district finances?             | 21%            | 0.0     | 0%           |
| Did you vote in the most recent school board/budget election?                      | 13%            | 0.0     | 0%           |

**Improvement Possible**



This graph shows the current parent mean rating for budget/budget process along with the **maximum possible score**.