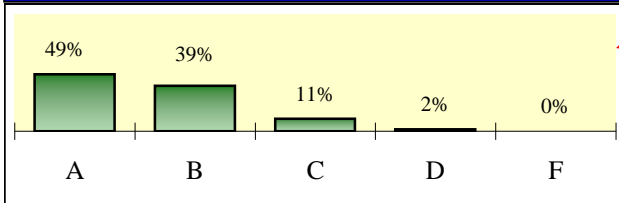

ATMOSPHERE OF THE SCHOOL



SCHOOL ATMOSPHERE: ELEMENTARY STUDENTS

Elementary Students' Satisfaction Rating Distribution



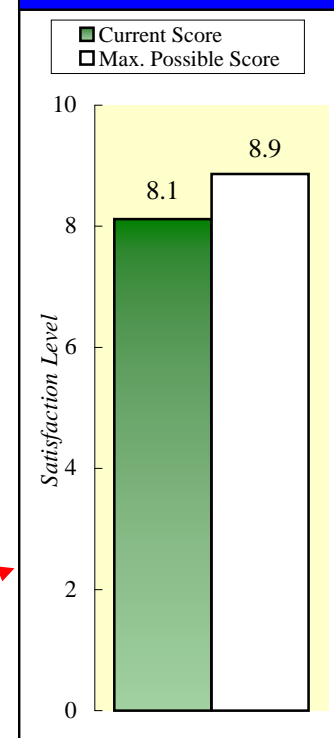
This graph shows the distribution of satisfaction scores elementary students provided for the overall atmosphere rating question.

Impact Index is a combination of the penalty and the % reporting the problem. It represents the percent of **potential improvement** that can be realized if the occurrence of the problem is reduced to zero.

Penalty for each issue is the difference between the mean satisfaction scores of those who reported that an issue was a problem and those who reported that the same issue was not a problem. The larger the penalty, the larger the effect of the problem is on satisfaction for those people who have experienced the issue.

| SCHOOL ATMOSPHERE ISSUES | % with Problem | Penalty | IMPACT INDEX |
|---|----------------|---------|--------------|
| Are the rules at your school fair? | 22% | 1.5 | 45% |
| Are students well-behaved while in school? | 31% | 0.9 | 37% |
| Do you feel safe while in school? | 5% | 2.6 | 18% |
| Is gossip a serious problem at school? | 36% | 0.0 | 0% |
| Are school assemblies usually interesting? | 31% | 0.0 | 0% |
| Is your school too crowded? | 19% | 0.0 | 0% |
| Do students help each other with school work? | 16% | 0.0 | 0% |
| Are most other students nice to you? | 14% | 0.0 | 0% |
| Do you feel safe walking to and from school? | 12% | 0.0 | 0% |

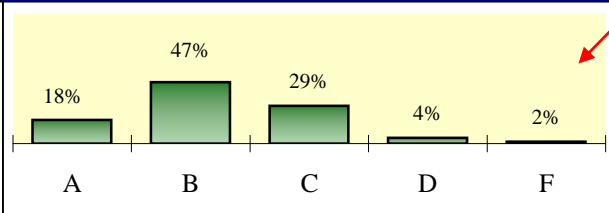
Improvement Possible



This graph shows the current elementary student mean rating for school atmosphere, along with the **maximum possible score**.

SCHOOL ATMOSPHERE: SECONDARY STUDENTS

Secondary Students' Satisfaction Rating Distribution



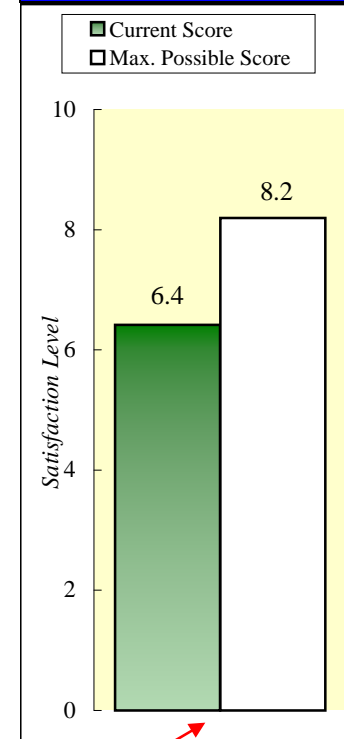
This graph shows the distribution of satisfaction scores secondary students provided for the overall atmosphere rating question.

Impact Index is a combination of the penalty and the % reporting the problem. It represents the percent of **potential improvement** that can be realized if the occurrence of the problem is reduced to zero.

Penalty for each issue is the difference between the mean satisfaction scores of those who reported that an issue was a problem and those who reported that the same issue was not a problem. The larger the penalty, the larger the effect of the problem is on satisfaction for those people who have experienced the issue.

| SCHOOL ATMOSPHERE ISSUES | % with Problem | Penalty | IMPACT INDEX |
|---|----------------|---------|--------------|
| Are the rules at your school fair? | 35% | 1.6 | 31% |
| Is gossip a serious problem at school? | 63% | 0.7 | 25% |
| Are students well-behaved while in school? | 39% | 1.0 | 23% |
| Do teachers encourage extracurricular activities? | 23% | 0.5 | 7% |
| Do you feel safe walking to and from school? | 11% | 0.8 | 5% |
| Do other kids try to get you to use drugs in school? | 11% | 0.9 | 5% |
| Do you feel safe while in school? | 5% | 1.4 | 4% |
| Do students have a say in school policies that affect them? | 66% | 0.0 | 0% |
| Are school assemblies interesting? | 56% | 0.0 | 0% |
| Is there enough time between classes? | 56% | 0.0 | 0% |
| Is your school too crowded? | 45% | 0.0 | 0% |
| Is vandalism a problem at school? | 41% | 0.0 | 0% |
| Do you feel too much pressure to compete for good grades? | 41% | 0.0 | 0% |
| Are there too many students in some of your classes? | 37% | 0.0 | 0% |
| Are most other students nice to you? | 14% | 0.0 | 0% |
| Do you feel pressure from other students to be sexually active in school? | 13% | 0.0 | 0% |
| Do students help each other with school work? | 12% | 0.0 | 0% |
| Do other kids try to get you to drink alcohol in school? | 7% | 0.0 | 0% |

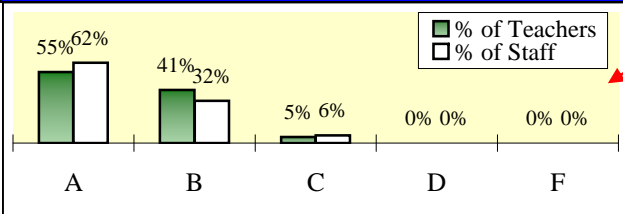
Improvement Possible



This graph shows the current secondary student mean rating for school atmosphere, along with the **maximum possible score**.

SCHOOL ATMOSPHERE: TEACHERS/STAFF

Teachers'/Staff's Satisfaction Rating Distribution

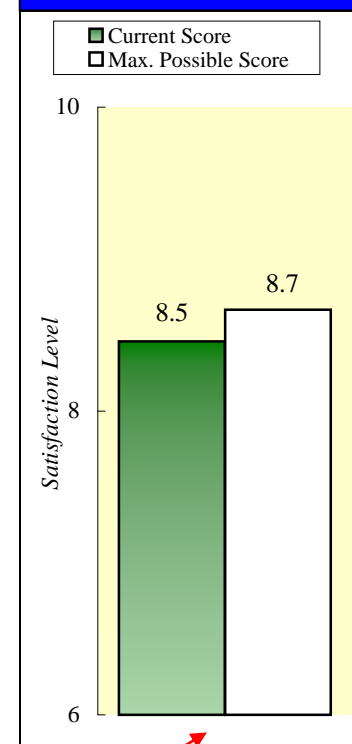


This graph shows the distribution of satisfaction scores teachers and staff provided for the overall school atmosphere rating question.

Impact Index is a combination of the penalty and the % reporting the problem. It represents the percent of **potential improvement** that can be realized if the occurrence of the problem is reduced to zero.

Penalty for each issue is the difference between the mean satisfaction scores of those who reported that an issue was a problem and those who reported that the same issue was not a problem. The larger the penalty, the larger the effect of the problem is on satisfaction for those people who have experienced the issue.

Improvement Possible



This graph shows the current teachers/staff mean rating for atmosphere, along with the **maximum possible score**.

| SCHOOL ATMOSPHERE ISSUES | % with Problem | Penalty | IMPACT INDEX |
|---|----------------|---------|--------------|
| Do other teachers/staff go out of their way for you? | 20% | 1.0 | 100% |
| Is your school too crowded? | 63% | 0.0 | 0% |
| Do you have enough time for helping individual students? | 52% | 0.0 | 0% |
| Is your workload too high? | 45% | 0.0 | 0% |
| Do you have enough time for planning and grading? | 43% | 0.0 | 0% |
| Are there too many students in any of your classes? | 27% | 0.0 | 0% |
| Is vandalism a problem at school? | 24% | 0.0 | 0% |
| Is student learning time protected from disruptions in your class? | 23% | 0.0 | 0% |
| Do you have adequate time for classroom instruction? | 12% | 0.0 | 0% |
| Is gossip among teachers/staff a serious problem? | 10% | 0.0 | 0% |
| Does your school expect academic excellence from all students? | 9% | 0.0 | 0% |
| Are rules for teachers/staff at your school fair? | 4% | 0.0 | 0% |
| Have you been assigned to classes you do not feel qualified to teach? | 3% | 0.0 | 0% |
| Is there enough time between classes? | 3% | 0.0 | 0% |
| Do you feel safe while in school? | 1% | 0.0 | 0% |